



Sheryl Pillay
063 567 1657
sheryl.pillay@seeff.com

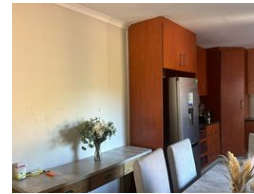
Contact Richards Bay

035 7890490

Lira Link Rd, Unit 2 Montego Park, Richards Bay Central, Richards Bay, 3900



Web Ref RLS939868



R12,500 pm

Lease Period 12 months
Annual Escalation -

Availability Immediately

Deposit -

3 2 2

Duet apartment for rental in the heart of Birdswood

This charming 3-bedroom duet is the perfect family home, located in a peaceful and friendly neighborhood. The property offers a comfortable and spacious layout with modern amenities to cater to your needs.

The well-equipped kitchen boasts sleek countertops, ample storage space, and state-of-the-art appliances, making meal preparation a breeze. Whether it's a casual breakfast or a gourmet dinner, this kitchen will inspire your inner chef.

One of the highlights of this property is the double garage, providing ample space for your vehicles and additional storage. Say goodbye to the hassle of street parking and enjoy the convenience and security of having your cars parked right at your doorstep.

Call today for your viewing appointment

Features

Pets Allowed Yes

Interior	
Bedrooms	3
Bathrooms	2
Kitchens	1
Recep. Rooms	2
Furnished	No

Exterior	
Garages	2
Security	No
Pool	No
Views	False

Sizes	
Floor Size	148m ²
Land Size	1,221m ²