

Seeff



Siphindile Dlamini
073 033 8955
siphindile.dlamini@seeff.com

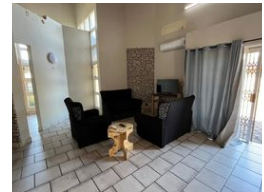
Contact Richards Bay

035 7890490

Lira Link Rd, Unit 2 Montego Park, Richards Bay Central, Richards Bay, 3900



Web Ref RLS88028



R13,500 pm

Lease Period 12 months
Annual Escalation -

Availability Immediately

Deposit -

3 2

Absolutely stunning 3 bedroom family home.

"This family home is a dream come true, where laughter and memories wait to be made. The sparkling pool is inviting on lazy summer days and for refreshing dips. The spacious yard stretches out like a canvas, ready for children's games, family barbecues, and sun-kissed afternoons.

As you step inside, the unique Tuscan style, blended with modern flair, wraps you in warmth and sophistication. The double carport stands ready to shelter your vehicles, while the generous interior spaces beckon you to unwind, relax, and make this house your home.

With its perfect blend of elegance and comfort, this stunning property is the ultimate retreat for your loved ones, where memories will be etched in every corner, and love will fill every room."

Contact me to schedule a viewing and make this beautiful home yours today!

Features

Pets Allowed Yes

Interior

Bedrooms	3
Bathrooms	2
Kitchens	1
Recep. Rooms	2
Furnished	No

Exterior

Carports / Parkings	2
Security	No
Pool	Yes
Views	False

Sizes

Land Size	1,376m ²
-----------	---------------------

Extras

Garden Patio Totally Fenced Satellite Dish Air Conditioner Safe Alarm System Dishwasher Connection Washing Machine Connection Linen Room Loft