



Mycele-lee Beaumont
060 476 1867
mycele-lee.beaumont@seeff.com

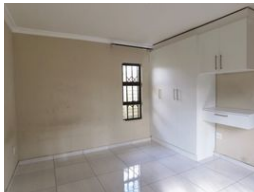
Contact Richards Bay
035 7890490

Lira Link Rd, Unit 2 Montego Park, Richards Bay Central, Richards Bay, 3900

1 Bedroom Garden Cottage To Let in Birdswood



Web Ref RLS892768



R5,600 pm

Lease Period 12 months **Availability** Immediately **Deposit** -
Annual Escalation -

1 1

Private garden cottage in Birdswood

Nestled within a safe street in Birdswood, within driveable distance to all amenities, you will find this secure cottage with the finishes required to suit the needs of a professional individual with sober habits.

The unit does have a prepaid electricity meter, and a covered carport fitted for one vehicle.

Not suitable for a family with children and regret no pets allowed.

Deposits are payable upfront, which will be the same as the rental.

Features

Interior		Exterior	
Bedrooms	1	Carports / Parkings	1
Bathrooms	1	Security	No
Kitchens	1	Pool	No
Recep. Rooms	1	Views	False
Furnished	No		

Extras
Electric Gate

