

Seeff



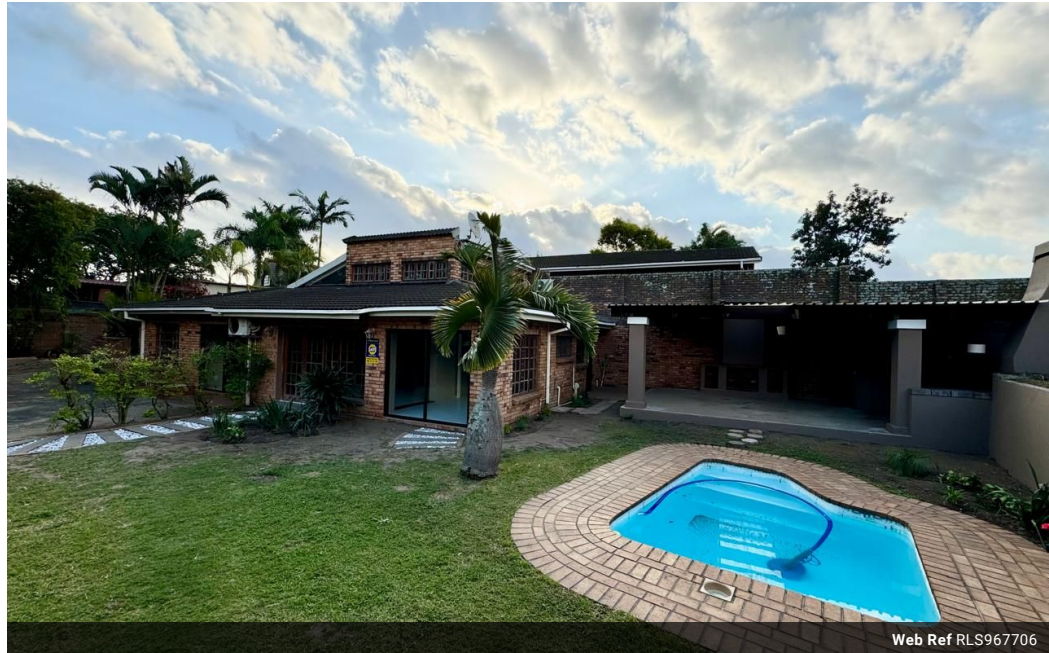
Sheryl Pillay
063 567 1657
sheryl.pillay@seeff.com

Contact Richards Bay

035 7890490

Lira Link Rd, Unit 2 Montego Park, Richards Bay Central, Richards Bay, 3900

3 Bedroom House To Let in Birdwood



Web Ref RLS967706



R16,000 pm

Lease Period 12 months
Annual Escalation -

Availability Immediately

Deposit -

3 3

Delightful 3 Bedroom With A Warm Charming Character.

This 3-bedroom is the perfect family home.

The architectural design is cleverly thought out to maximize the stand, allowing for privacy, practicality & fantastic features.

The property boasts 3 bedrooms & 3 bathrooms. The Main bedroom has an open loft design giving it a relaxed, open feel. It is perfectly completed by a striking en-suite.

The 2nd light-filled bedroom opens up to the garden & has a walk-in closet with enough space to utilize as a study as well.

The 3rd bedroom is a loft room allowing for extra privacy, and the space allows it to easily accommodate additional furnishing.

The air-conditioned central living area is the heart of the home & is open plan to the stand-out kitchen & dining room. The fully-fitted kitchen is not only spacious, well designed & unique but provides plenty of storage space and is...

Features

Pets Allowed Yes

Interior

Bedrooms	3
Bathrooms	3
Kitchens	1
Recep. Rooms	2
Furnished	No

Exterior

Carports / Parkings	2
Security	No
Pool	Yes
Views	False

Sizes

Floor Size	218m ²
------------	-------------------

Extras

Electric Gate Totally Walled Built In Braai Stove Washing Machine Connection Walk In Closet