



**Sheryl Pillay**  
063 567 1657  
sheryl.pillay@seeff.com

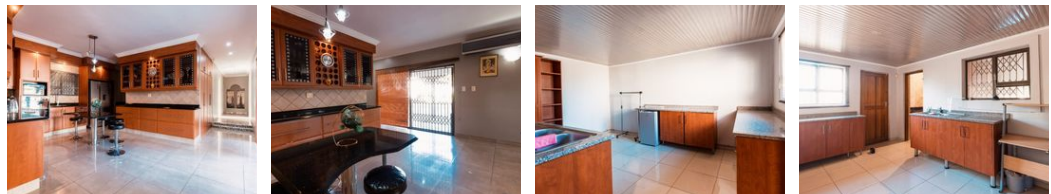
Contact Richards Bay

035 7890490

Lira Link Rd, Unit 2 Montego Park, Richards Bay Central, Richards Bay, 3900



Web Ref RLS977394



R18,500 pm

Monthly Rates R1,900    Lease Period 12 months    Availability Immediately  
Deposit -    Annual Escalation -

4    3    2

Modern family home to rent.

Welcome to this breathtaking and modern family home perfectly located close to schools and many other amenities.

This property boasts four spacious bedrooms, and three bathrooms of which 2 are en-suites, a fully fitted and modern kitchen, a spacious dining and lounge area, and the perfect entertainment area to spend some time with your loved ones.

There is also a sparkling blue swimming pool to enjoy with your family on those hot summer days. A beautiful garden for those who love being around nature and love doing gardening.

Do not hesitate to make the right move! Call now for your viewing appointment.

### Features

<b>Pets Allowed</b>	Yes				
<b>Interior</b>		<b>Exterior</b>		<b>Sizes</b>	
Bedrooms	4	Garages	2	Land Size	1,125m <sup>2</sup>
Bathrooms	3	Security	No		
Kitchens	1	Pool	Yes		
Recep. Rooms	2	Views	False		
Studies	1				
Furnished	No				

#### Extras

Electric Gate Electric Garage Totally Walled Air Conditioner Built In Braai Burglar Bars Granite Tops Breakfast Nook Stove Gas Oven Eye Level Oven Extractor Fan Dishwasher Connection Washing Machine Connection Walk In Closet Entrance Hall Scullery Laundry