

Seeff



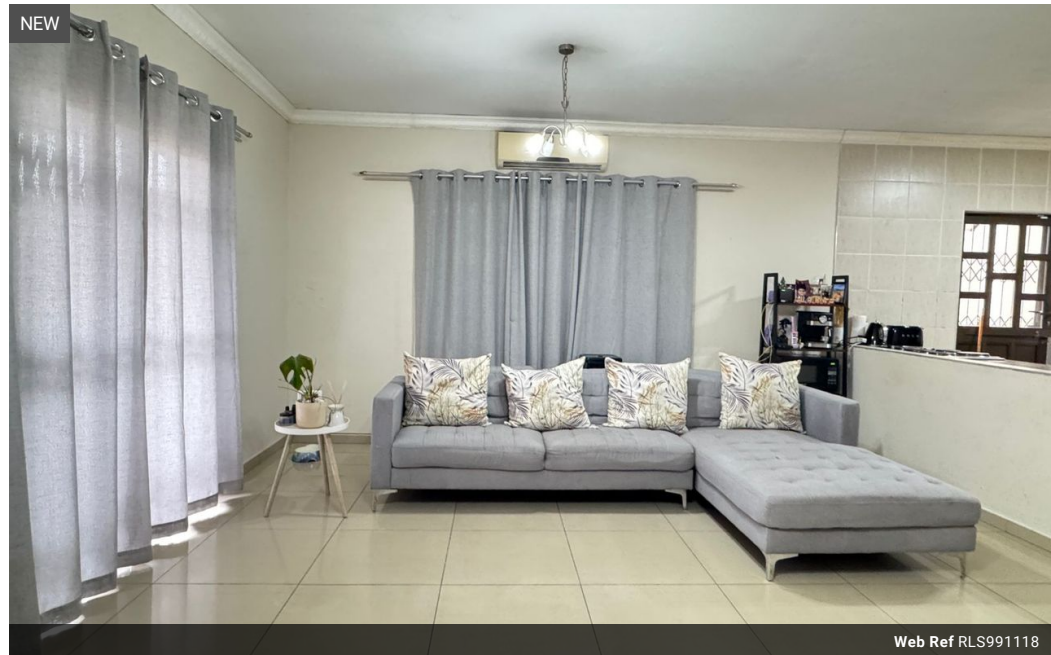
Sheryl Pillay
063 567 1657
sheryl.pillay@seeff.com

Contact Richards Bay

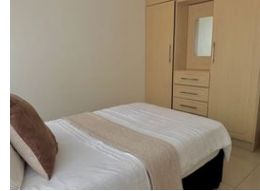
035 7890490

Lira Link Rd, Unit 2 Montego Park, Richards Bay Central, Richards Bay, 3900

3 Bedroom House To Let in Birdwood



Web Ref RLS991118



R8,000 pm

Lease Period 12 months
Annual Escalation -

Availability 01 Dec 2025

Deposit -

3 2

Modern interior and spacious apartment ideally located in a upmarket area

This immaculate 3 bedroom apartment has so much to offer.

The open-plan lounge flows seamlessly toward a fully fitted kitchen.

The porcelain tiles, modern finishes, and spacious rooms are perfect for any family.

Contact me to make this beautiful home yours today.

Features

Interior

Bedrooms	3
Bathrooms	2
Kitchens	1
Recep. Rooms	2
Furnished	No

Exterior

Carports / Parkings	1
Security	No
Pool	No
Views	False

Sizes

Land Size	1,174m ²
-----------	---------------------

Extras

Washing Machine Connection Electric Gate TV Antenna ADSL Totally Walled