

Seeff



Sheryl Pillay
063 567 1657
sheryl.pillay@seeff.com

Contact Richards Bay

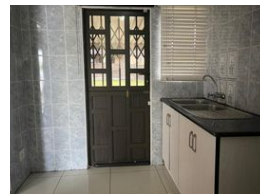
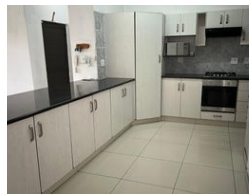
035 7890490

Lira Link Rd, Unit 2 Montego Park, Richards Bay Central, Richards Bay, 3900

3 Bedroom House To Let in Birdwood



Web Ref RLS916636



R13,600 pm

Lease Period 12 months
Annual Escalation -

Availability Immediately

Deposit -

3 2 2

A beautiful family home in Bordswood

Nestled in a safe and secure neighborhood lies this excellent three-bedroom house the main bedroom with an en-suite, a walk-in closet, and two bathrooms. This unit also boasts a spacious yard for the kids and pets to enjoy!

The large yard also provides extra parking space if required.

This house also offers ample cupboard space, a fully fitted kitchen that leads into the open-plan lounge area, and an automated double garage.

Call today for a viewing appointment

Features

Pets Allowed		Yes			
Interior					
Bedrooms	3	Exterior		Sizes	
Bathrooms	2	Garages	2	Floor Size	998m ²
Kitchens	1	Security	No	Land Size	1,000m ²
Recep. Rooms	2	Pool	No		
Furnished	No	Views	False		

Extras

Garden Electric Gate Electric Garage Granite Tops Scullery Washing Machine Connection