



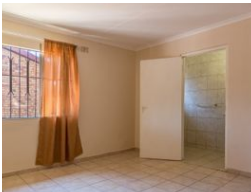
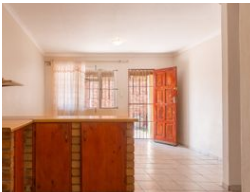
Sheryl Pillay  
063 567 1657  
sheryl.pillay@seeff.com

Contact Richards Bay  
035 7890490  
Lira Link Rd, Unit 2 Montego Park, Richards Bay Central, Richards Bay, 3900

2 Bedroom Apartment To Let in Brackenham



Web Ref 3946584



R6,300 pm

Lease Period 12 months  
Annual Escalation - Availability Immediately Deposit -

2 2 1

Stunning 2 bedroom home in well known area

Every once in a while a truly beautiful home in one of the most superb locations in Brackenham come on market. There is simply no other home quite like it, incorporating all the elements of nature with a symphony of beautiful modern finishes throughout.

This home is safe and secure with automated gate access and perimeter walling. Featuring 2 modern bathrooms, open plan lounge leading to the modern kitchen with built in cupboards and plenty of counter top space & cabinetry.

The town of Richards Bay boasts the country's largest harbour and some of its most magnificent wetland scenery. The town also offers the visitor entrance to Zululand. This part of the African continent is a land of exquisite beauty unique in its incredible diversity. Richards Bay is a vibrant town and is quickly becoming a chosen north coast holiday...

Features

Pets Allowed		Yes	
Interior		Exterior	
Bedrooms	2	Garages	1
Bathrooms	2	Security	Yes
Kitchens	1	Pool	No
Recep. Rooms	1	Views	False
Furnished	No	Sizes	
		Land Size	800m²

