



Sheryl Pillay
063 567 1657
sheryl.pillay@seeff.com

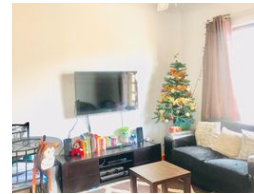
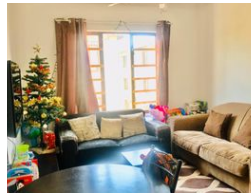
Contact Richards Bay

035 7890490

Lira Link Rd, Unit 2 Montego Park, Richards Bay Central, Richards Bay, 3900



Web Ref 3911999



R5,500 pm

Lease Period 12 months
Annual Escalation -

Availability Immediately

Deposit -

2 1

Ideal lock-up & Go

This is a lovely 2 bedroom, 1 bathroom home that has a fitted kitchen.

All the rooms have built-in cupboards and great views. The bathroom is also neat and modern.

This is a great unit for a starter or small family that also has a safe and secure parking area.

The Unit is located close to great schools and only a few minutes from fuelling stations and shopping centers.

Make the Smart Move!!

Features

Interior

Bedrooms 2
Bathrooms 1
Kitchens 1
Recep. Rooms 1
Furnished No

Exterior

Security Yes
Pool No
Views False

Sizes

Floor Size 45m²
Land Size 6,309m²

