

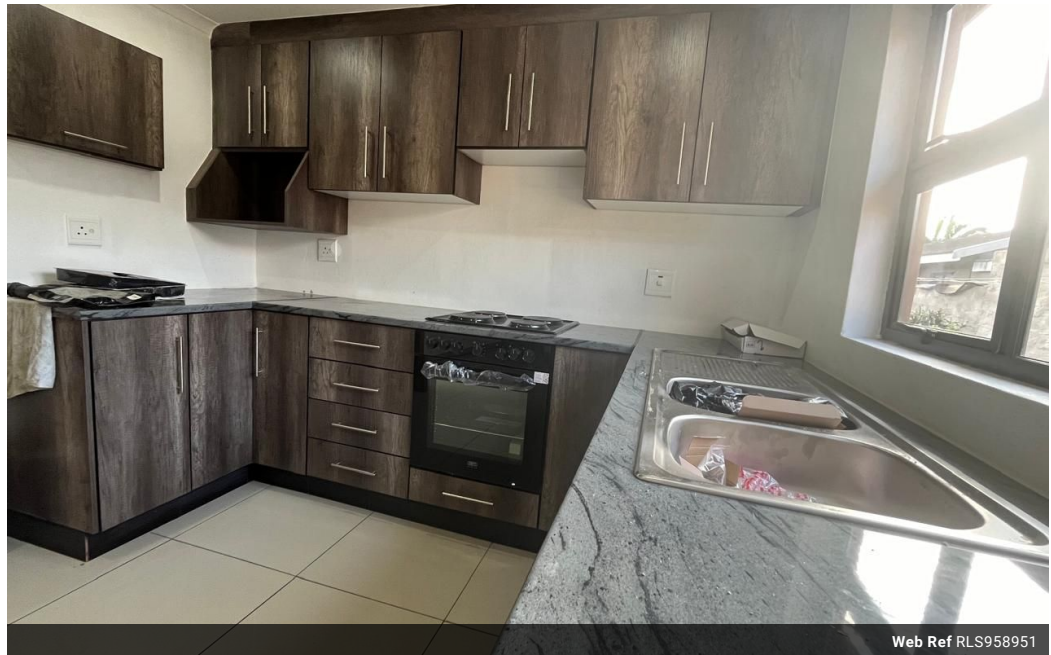


**Sheryl Pillay**  
 063 567 1657  
 sheryl.pillay@seeff.com

Contact Richards Bay

035 7890490

Lira Link Rd, Unit 2 Montego Park, Richards Bay Central, Richards Bay, 3900



Web Ref RLS958951



R7,700 pm

**Lease Period** 12 months    **Availability** Immediately    **Deposit** -  
**Annual Escalation** -

2    2

Newley - renovated 2 bed garden cottage in Brackenham

Located on a good street in Brackenham lies this brand-new two-bedroom unit. Equipped with modern finishes and ample space throughout. It is also equipped with one main bathroom and an en suite bathroom.

Contact me today for your viewing appointment!

### Features

**Interior**

Bedrooms 2  
 Bathrooms 2  
 Kitchens 1  
 Recep. Rooms 1  
 Furnished No

**Exterior**

Security No  
 Pool No  
 Views False

**Extras**

Stove Eye Level Oven