

Seeff



Sheryl Pillay
063 567 1657
sheryl.pillay@seeff.com

Contact Richards Bay

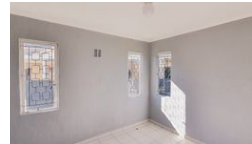
035 7890490

Lira Link Rd, Unit 2 Montego Park, Richards Bay Central, Richards Bay, 3900

3 Bedroom House To Let in Brackenham



Web Ref RLS919958



R8,000 pm

Lease Period 12 months **Availability** Immediately **Deposit** -
Annual Escalation -

3 1

Home is where the heart is.

This home is situated in Brackenham, close to schools and shopping centers, and central Richards Bay.

Offering spacious bedrooms, open-plan living areas, and a fitted kitchen.

Call me today to schedule your viewing appointment

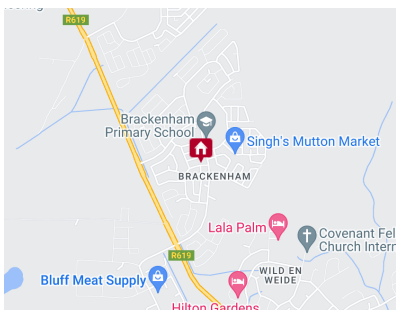
Features

Pets Allowed Yes

Interior
Bedrooms 3
Bathrooms 1
Kitchens 1
Recep. Rooms 1
Furnished No

Exterior
Security No
Pool No
Views False

Sizes
Land Size 448m²



<https://richardsbay.seeff.com>