

Seeff



Melissa Struwig
083 859 6029
melissa.struwig@seeff.com

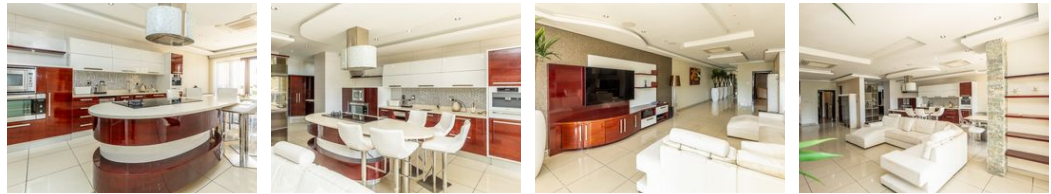
Contact Richards Bay

035 7890490

Lira Link Rd, Unit 2 Montego Park, Richards Bay Central, Richards Bay, 3900



Web Ref RLS974057



R60,000 pm

Lease Period 12 months **Availability** Immediately **Deposit** -
Annual Escalation -

4 4 2

Modern apartment for rental.

This modern property in the estate offers a spacious and open-plan kitchen and lounge area, complete with granite countertops for a sleek and sophisticated look.

It features four bedrooms and four bathrooms, providing ample space for a growing family or hosting guests. The property also includes a balcony where you can enjoy the stunning sea views, adding a touch of tranquility to your everyday life. With a double garage, you'll have plenty of room for parking and storage. The porcelain tiles throughout the home not only add a touch of elegance but also make for easy maintenance. Located in a prime location, you'll have easy access to all the amenities and attractions the area has to offer.

From shopping centers and schools to recreational facilities and restaurants, everything is just a stone's throw away.

Features

Interior		Exterior		Sizes	
Bedrooms	4	Garages	2	Floor Size	335m ²
Bathrooms	4	Carports / Parkings	2	Land Size	19,325m ²
Kitchens	1	Security	No		
Recep. Rooms	2	Pool	No		
Furnished	No	Views	False		

Extras

Electric Gate Electric Garage Totally Walled Totally Fenced Air Conditioner Granite Tops
Breakfast Nook Extractor Fan Walk In Closet Scullery Laundry