

Seeff

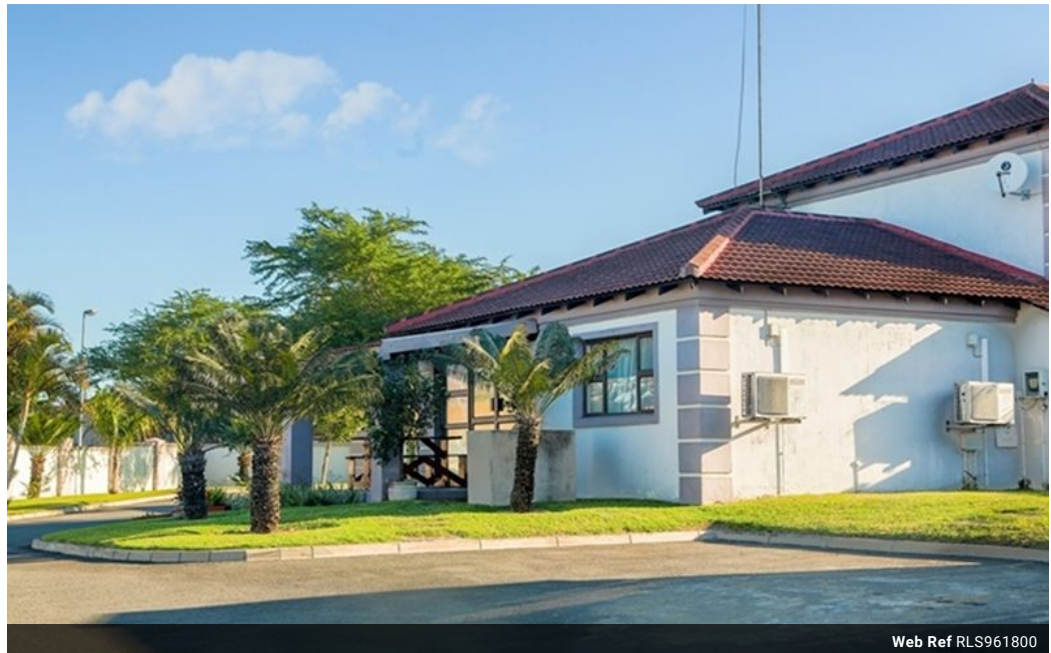


Melissa Struwig
083 859 6029
melissa.struwig@seeff.com

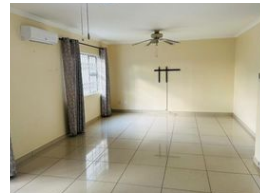
Contact Richards Bay

035 7890490

Lira Link Rd, Unit 2 Montego Park, Richards Bay Central, Richards Bay, 3900



Web Ref RLS961800



R13,500 pm

Lease Period 12 months
Annual Escalation -

Availability Immediately

Deposit -

2 1.5 1

Charming 2-Bedroom Duplex in Pristine Complex - Available Immediately

Discover your new home in this beautifully maintained, spick-and-span complex. This charming 2-bedroom duplex offers comfortable living in a serene environment.

Downstairs Features:

Open-plan kitchen and lounge area, perfect for modern living and entertaining
Seamless flow from the lounge to your private garden, ideal for outdoor relaxation

Upstairs Features:

Two spacious bedrooms, both with built-in wardrobes provide ample storage
One well-appointed bathroom for convenience.

Additional Amenities:

Single garage to secure your vehicle
Courtyard area for extra outdoor space

This lovely unit is available for immediate occupancy. Don't miss out on the opportunity to live in this desirable, well-kent complex

Features

Interior

Bedrooms	2
Bathrooms	1.5
Kitchens	1
Recep. Rooms	1
Furnished	No

Exterior

Garages	1
Security	No
Pool	No
Views	False

Sizes

Floor Size	126m ²
Land Size	8,652m ²

Extras

Electric Gate Granite Tops Breakfast Nook Stove Washing Machine Connection