

Seeff



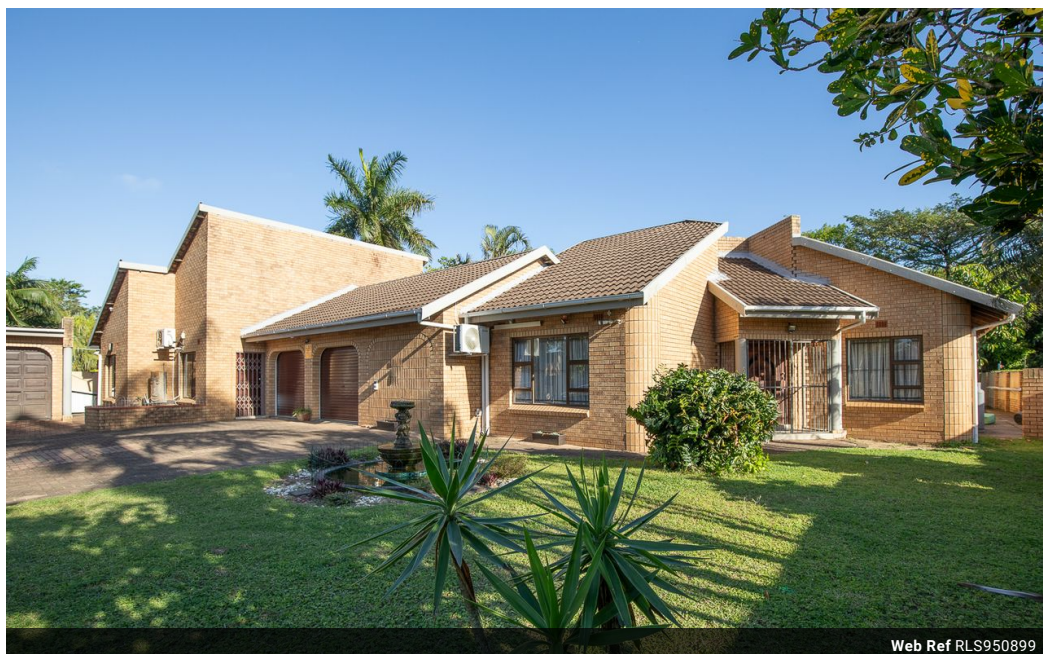
Sheryl Pillay
063 567 1657
sheryl.pillay@seeff.com

Contact Richards Bay

035 7890490

Lira Link Rd, Unit 2 Montego Park, Richards Bay Central, Richards Bay, 3900

4 Bedroom House To Let in Meer En See



Web Ref RLS950899



R30,800 pm

Lease Period 12 months
Annual Escalation -

Availability Immediately

Deposit -

 4  2  4

Exceptional family home in a great location

Stop your search! This is what you have been waiting for. This fabulous 4-bedroom home is sprawling and set on a substantial stand. The home has expansive living spaces that lend itself to entertaining.

Upon entering you will find a beautiful entrance hall. The 2 lounges offer space for the children while still providing a safe haven for the parents. The flow from the bar, TV lounge, and kitchen is easy and warm. Leading from this space is a fabulous covered patio which is generous in size and has a built-in braai.

The bedrooms are so spacious and there are a further 2 full bathrooms to complete the main house's offerings.

The large 2 bedroom flat is tremendous and must be seen to fully appreciate the comfort and size this unit offers.

There are 4 garages with plenty of storage space. The options for this home are...

Features

Pets Allowed Yes

Interior

| | |
|--------------|----|
| Bedrooms | 4 |
| Bathrooms | 2 |
| Kitchens | 1 |
| Recep. Rooms | 2 |
| Studies | 1 |
| Furnished | No |

Exterior

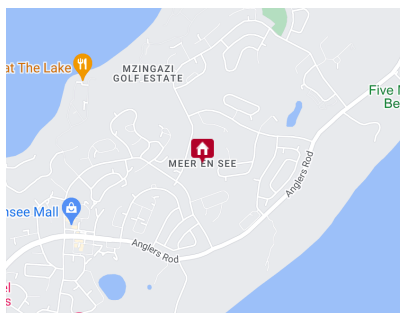
| | |
|---------------------|-------|
| Garages | 4 |
| Carports / Parkings | 4 |
| Security | No |
| Pool | Yes |
| Views | False |

Sizes

| | |
|------------|---------------------|
| Floor Size | 173m ² |
| Land Size | 1,394m ² |

Extras

Built In Braai Breakfast Nook Dishwasher Connection Washing Machine Connection



<https://richardsbay.seeff.com>