



**Sheryl Pillay**  
063 567 1657  
sheryl.pillay@seeff.com

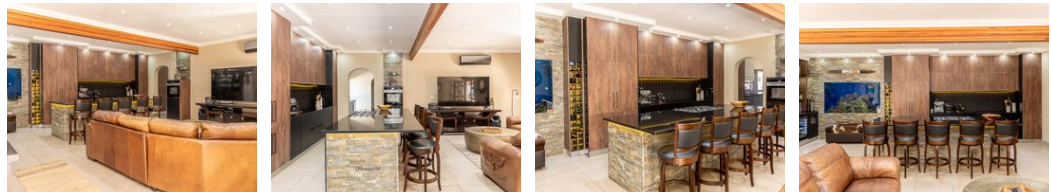
Contact Richards Bay

035 7890490

Lira Link Rd, Unit 2 Montego Park, Richards Bay Central, Richards Bay, 3900



Web Ref RLS957422



R28,600 pm

**Lease Period** 12 months **Availability** Immediately **Deposit** -  
**Annual Escalation** -

3 3 5

Calling all boat enthusiasts with a discerning taste

Impeccable doesn't begin to describe this well-appointed home with upmarket finishes throughout. The heart of this home is the modern kitchen with a large island. The detail of this space needs to be seen to fully understand the detail and quality of the cabinetry and choice of countertops. The open-plan layout also features a built-in marine fish tank and bar area. The living room flows onto the large covered patio with a built-in braai.

The separate scullery leads to a laundry. The bathrooms are exceptionally finished and the main bedroom is a sanctuary with plenty of cupboard space. This home is situated on a large corner plot. The pool area is substantial and has an established but low-maintenance garden.

The 3 bedroom house has a separate 2 bedroom flat. This cottage is ideal for the extended family. This entrance is...

### Features

**Pets Allowed** Yes

#### Interior

Bedrooms	3
Bathrooms	3
Kitchens	1
Recep. Rooms	3
Furnished	No

#### Exterior

Garages	5
Carports / Parkings	1
Security	No
Pool	Yes
Views	False

#### Extras

Garden Linen Room Scullery Laundry Open Plan Built In Braai Boathouse Built in Wardrobes Gas Hob Water Tanks