

**Seeff**



**Melissa Struwig**  
083 859 6029  
melissa.struwig@seeff.com

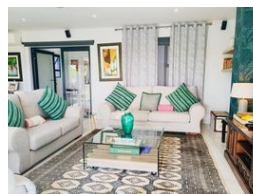
Contact Richards Bay

035 7890490

Lira Link Rd, Unit 2 Montego Park, Richards Bay Central, Richards Bay, 3900



Web Ref RLS968637



R44,000 pm

**Lease Period** 12 months  
**Annual Escalation** -

**Availability** Immediately

**Deposit** -

5 4 3

### Discover Luxury Living on Mzingazi Golf Estate

This magnificent 5-bedroom, 4-bathroom property spans over 1,300 square meters, offering an exceptional blend of comfort and elegance. Nestled within the prestigious Mzingazi Golf Estate, this residence is perfect for families and entertaining alike.

Step inside to find spacious, light-filled living areas that seamlessly flow into the expansive outdoor spaces. The heart of the home features a modern kitchen and a large lounge, ideal for gatherings.

The outdoor area is a true highlight, featuring a sparkling pool surrounded by a beautifully landscaped garden. The expansive entertainment area, complete with a fitted braai, is perfect for hosting friends and family year-round.

Enjoy the serenity and security of estate living while being just moments away from top-tier amenities and stunning golf course views.

Schedule your...

### Features

**Pets Allowed** Yes

#### Interior

Bedrooms	5
Bathrooms	4
Kitchens	1
Recep. Rooms	3
Furnished	No

#### Exterior

Garages	3
Security	Yes
Pool	Yes
Views	False

#### Extras

Electric Garage Air Conditioner Built In Braai Burglar Bars Granite Tops Breakfast Nook Gas Oven Stove Eye Level Oven Dishwasher Connection Washing Machine Connection Walk In Closet Scullery Laundry