



Melanie Bosch
073 154 2426
melanie.bosch@seeff.com

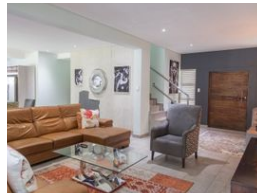
Contact Richards Bay

035 7890490

Lira Link Rd, Unit 2 Montego Park, Richards Bay Central, Richards Bay, 3900



Web Ref RLS976105



R36,000 pm

Lease Period 12 months **Availability** Immediately **Deposit** -
Annual Escalation -

4 2 2

SPECTACULAR AND ELEGANT MANSION WITH MODERN FINISHES TO RENT IN GOLF ESTATE

A sense of luxurious space is immediately evident with the large open plan kitchen interacting seamlessly with the outdoor entertainment area. The upmarket finishes and design allow light to flood the interior living spaces ensuring a light and bright feeling throughout.

This welcoming and comfortable home is well designed and spacious open plan living areas. The estate has 24 hour access control, a well equipped club house with loads of amenities.

Call me today to view!

Features

Pets Allowed Yes

Interior

Bedrooms	4
Bathrooms	2
Kitchens	1
Recep. Rooms	2
Furnished	No

Exterior

Garages	2
Security	No
Pool	Yes
Views	False

Extras

Garden Electric Garage Totally Walled Air Conditioner Built In Bar Built In Braai Boomed Area Stove Dishwasher Connection Washing Machine Connection Scullery