

Seeff



Melanie Bosch
073 154 2426
melanie.bosch@seeff.com

Contact Richards Bay

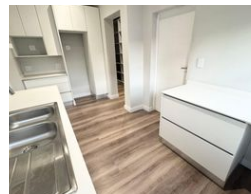
035 7890490

Lira Link Rd, Unit 2 Montego Park, Richards Bay Central, Richards Bay, 3900

4 Bedroom House To Let in Mzingazi Golf Estate



Web Ref RLS987856



R45,000 pm

Lease Period 12 months
Annual Escalation -

Availability Immediately

Deposit -

4 3 2

Modern & Luxurious Estate Lakeside Living

This modern double-storey architectural masterpiece is perfectly positioned within the prestigious Mzingazi Golf Estate, offering uninterrupted views of the spectacular Lake Mzingazi. Designed with clean lines and high-end finishes throughout, the home blends contemporary elegance with functional living.

The ground floor features a spacious open-plan living area that flows seamlessly into a sleek & ultra-modern kitchen. The stand-out feature is without doubt the Italian-made Infinity Countertops & centre island with water-fall sides. A separate scullery and custom walk-in pantry add convenience, while direct access to the expansive four-car garage enhances everyday practicality. Large stacking doors open the living space onto two undercover patios, drawing in the beauty of the lake and natural surroundings.

Upstairs, a...

Features

Pets Allowed Yes

Interior

Bedrooms	4
Bathrooms	3
Kitchens	1
Recep. Rooms	2
Studies	1
Furnished	No

Exterior

Garages	2
Security	No
Pool	No
Views	False

Extras

Garden Balcony Patio Electric Garage Air Conditioner Boomed Area Breakfast Nook Eye Level Oven Stove Dishwasher Connection Washing Machine Connection

<https://richardsbay.seeff.com>