

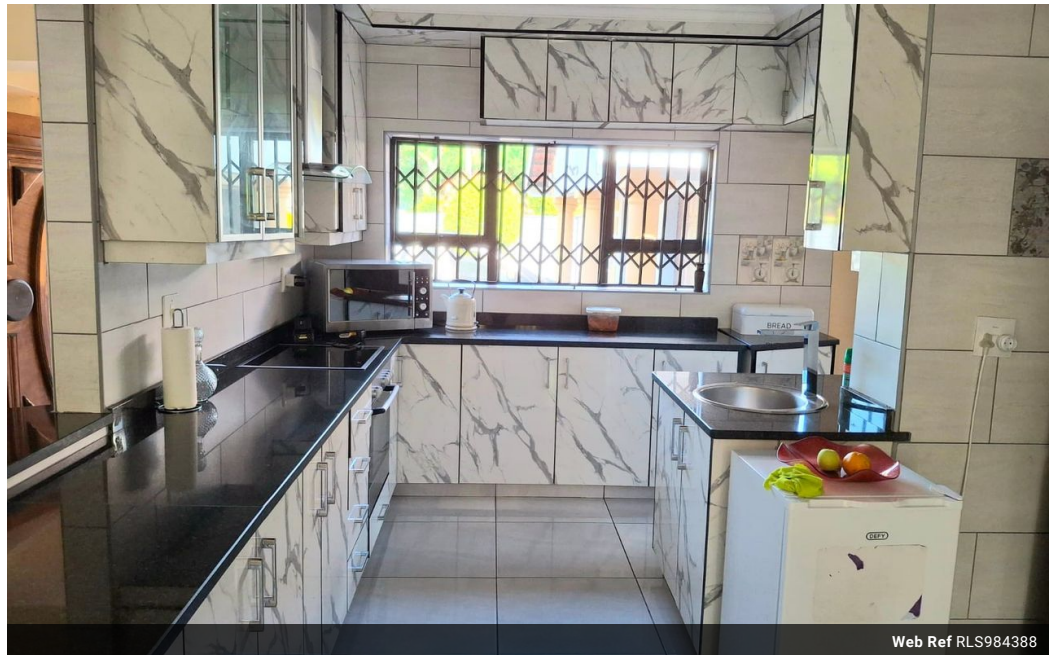


**S'Mile Mchunu**  
0787081996  
smile.mchunu@seeff.com

Contact Richards Bay

035 7890490

Lira Link Rd, Unit 2 Montego Park, Richards Bay Central, Richards Bay, 3900



Web Ref RLS984388



R40,000 pm

**Lease Period** 12 months  
**Annual Escalation** -

**Availability** Immediately

**Deposit** -

5 4 2

### Furnished -Luxury Executive Residence

This luxury executive residence is nestled in a prime location, this magnificent 4-bedroom masterpiece is designed for the ultimate in comfort, entertainment, and relaxation. Perfect for corporate or commercial residents, or a discerning family seeking a luxurious lifestyle.

#### Accommodation

- 4 spacious bedrooms, each with its own en-suite bathroom, providing unparalleled convenience and comfort
- Additional main bathroom for guests, ensuring ample amenities for all
- Expansive main bedroom with walk-in closet and open-plan en-suite, creating a serene retreat

#### Entertainment and Relaxation

- 2 lounges, perfect for relaxation and entertainment, offering ample space for family and friends
- TV room, ideal for family movie nights or sporting events
- Dining room, perfect for formal gatherings and special occasions
- Braai area and...

### Features

**Pets Allowed** Yes

#### Interior

Bedrooms	5
Bathrooms	4
Kitchens	1
Recep. Rooms	3
Furnished	No

#### Exterior

Garages	2
Security	No
Pool	Yes
Views	False

#### Sizes

Floor Size	4,072m <sup>2</sup>
Land Size	4,072m <sup>2</sup>

#### Extras

Garden Electric Garage Electric Gate Totally Fenced Totally Walled Guest Toilet Shower, Toilet and Basin Bath, Toilet and Basin Air Conditioner Safe Alarm System Breakfast Nook Stove Gas Oven Extractor Fan Dishwasher Connection Washing Machine Connection Scullery Laundry