



S'Mile Mchunu  
0787081996  
smile.mchunu@seeff.com

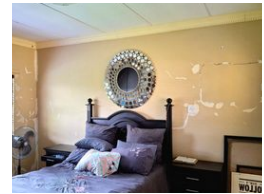
Contact Richards Bay

035 7890490

Lira Link Rd, Unit 2 Montego Park, Richards Bay Central, Richards Bay, 3900



Web Ref RLS978669



R14,800 pm

Lease Period 12 months  
Annual Escalation -

Availability Immediately

Deposit -

3 2

### Family home in Veld en Vlei.

This stunning three-bedroom house is a tranquil retreat that perfectly blends comfort, style, and convenience. As you step inside, you'll be greeted by the warm and inviting atmosphere of the spacious lounge, perfect for relaxing and unwinding.

The elegant dining area flows seamlessly into the sleek, modern kitchen, equipped with ample cabinetry and countertops. This culinary hub is ideal for whipping up delicious meals and entertaining family and friends.

The three spacious bedrooms offer serene retreats, each filled with natural light and ample storage. Two stylish bathrooms provide a relaxing oasis, perfect for rejuvenating after a long day.

Step outside into the picturesque garden, where lush greenery and vibrant blooms create a peaceful haven. The sparkling pool beckons on warm days, inviting you to take a refreshing...

### Features

**Pets Allowed** Yes

#### Interior

Bedrooms	3
Bathrooms	2
Kitchens	1
Recep. Rooms	2
Furnished	No

#### Exterior

Security	No
Pool	Yes
Views	False

#### Sizes

Land Size	1,092m <sup>2</sup>
-----------	---------------------

#### Extras

Electric Gate Totally Walled Built In Braai Granite Tops Stove Extractor Fan Dishwasher Connection Scullery