

Seeff

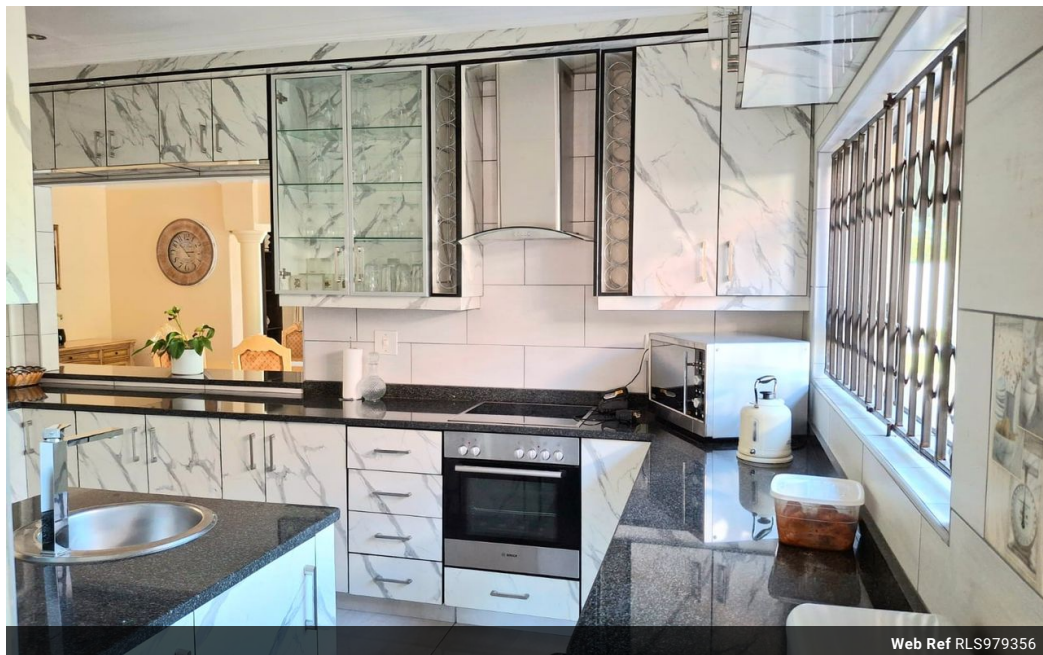


S'Mile Mchunu
0787081996
smile.mchunu@seeff.com

Contact Richards Bay

035 7890490

Lira Link Rd, Unit 2 Montego Park, Richards Bay Central, Richards Bay, 3900



Web Ref RLS979356



R30,500 pm

Lease Period 12 months Availability 01 May 2025 Deposit -
Annual Escalation -

5 4 2

Luxury Executive Residence

Nestled in a prime location, this magnificent 4-bedroom masterpiece is designed for the ultimate in comfort, entertainment, and relaxation. Perfect for corporate or commercial residents or a discerning family seeking a luxurious lifestyle.

Accommodation

- 4 spacious bedrooms, each with its own en-suite bathroom, providing unparalleled convenience and comfort
- Additional main bathroom for guests, ensuring ample amenities for all
- Expansive main bedroom with walk-in closet and open-plan en-suite, creating a serene retreat

Entertainment and Relaxation

- 2 lounges, perfect for relaxation and entertainment, offering ample space for family and friends
- TV room, ideal for family movie nights or sporting events
- Dining room, perfect for formal gatherings and special occasions
- Braai area and bar, designed for alfresco...

Features

Pets Allowed	Yes				
Interior		Exterior		Sizes	
Bedrooms	5	Garages	2	Land Size	4,070m ²
Bathrooms	4	Security	No		
Kitchens	1	Pool	Yes		
Recep. Rooms	3	Views	False		
Furnished	No				

Extras

Electric Gate Electric Garage Totally Walled Totally Fenced Air Conditioner Built In Bar Built In Braai Alarm System Burglar Bars Granite Tops Stove Extractor Fan Dishwasher Connection Washing Machine Connection Walk In Closet Laundry Scullery