



Sheryl Pillay
063 567 1657
sheryl.pillay@seeff.com

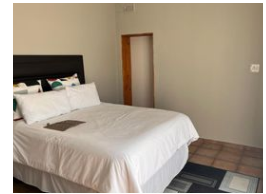
Contact Richards Bay

035 7890490

Lira Link Rd, Unit 2 Montego Park, Richards Bay Central, Richards Bay, 3900



Web Ref RLS935036



R19,800 pm

Lease Period 12 months
Annual Escalation -

Availability Immediately

Deposit -

3 2

Spacious House with a flatlet for rent in Veld en Vlei

Beautiful family home to rent in a well-known area, close to schools and the shopping center.

This home provides a fully fitted kitchen with granite tops and ample cabinet space as well as a scullery. You will find three spacious bedrooms with built-in cupboards, two bathrooms, a lounge, and a carport. This house is in a safe and secure area and is walled.

There is also a lovely garden cottage that has its own entrance.

When walking into this spacious flatlet you will find two bedrooms, with an open plan kitchen and lounge, separate shower, and toilet.

The main bedroom includes an ensuite.

Call today for your viewing appointment!

Features

Pets Allowed Yes

Interior

Bedrooms	3
Bathrooms	2
Kitchens	1
Recep. Rooms	2
Furnished	No

Exterior

Carports / Parkings	1
Security	No
Pool	No
Views	False

Sizes

Floor Size	206m ²
Land Size	1,077m ²

Extras

Totally Walled Granite Tops Eye Level Oven