



Jessica Liebenberg
0832360712
jessica.liebenberg@seeff.com

Contact Richards Bay

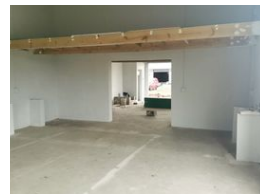
035 7890490

Lira Link Rd, Unit 2 Montego Park, Richards
Bay Central, Richards Bay, 3900

61m² Business For Sale in Alton



Web Ref CLS465



R700,000



The perfect spot for your business

One of the most exciting new developments in Richards bay in 2021, unlocking 6000 square meters of absolute prime retail space. Many National, household names have already backed this winner.

Each one of these 12 units houses 51 square meters of usable floor area and 15 square meters of Mezzanine floor. Purchasing one of these units will allow you the opportunity to use the entrance wall for advertising your company.

Call me to view this site in person, and to meet the Developer to explore how they can tailor a property to take your business to the

Features

Zoning Commercial

Sizes

Floor Size 61m²
Land Size 6,208m²