

Seeff



Mycle-Lee Beaumont
060 476 1867
mycle-lee.beaumont@seeff.com

Contact Richards Bay

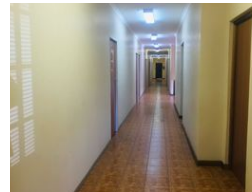
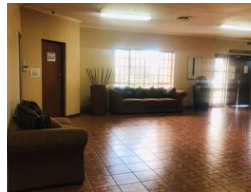
035 7890490

Lira Link Rd, Unit 2 Montego Park, Richards Bay Central, Richards Bay, 3900

7,675m² Office To Let in Richards Bay Central

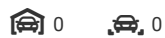


Web Ref CLS4052



R9,196 per m²

Gross Monthly Rental R9,196 Excl. VAT



Double the Productivity in Richards Bay's Hub!

Secure, central, and perfectly sized for small businesses or office branches.

Features:

- a double office for collaborative success
- 2 fully-equipped kitchens for convenience
- 2 modern toilets for comfort
- Prime location in Richards Bay's central business district

Features

Zoning Commercial

Sizes

Floor Size 7,675m²
Land Size 7,675m²

<https://richardsbay.seeff.com>