

Seeff



Thobile Nxumalo
0605548653
thobile.nxumalo@seeff.com

Contact Richards Bay

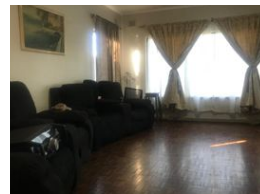
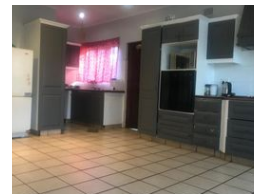
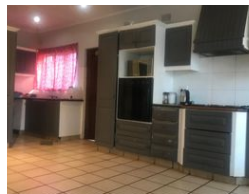
035 7890490

Lira Link Rd, Unit 2 Montego Park, Richards Bay Central, Richards Bay, 3900

4 Bedroom House For Sale in Grantham Park



Web Ref RLS977739



R1,385,000

4 2 2

Monthly Bond Repayment R13,827.56

Calculated over 20 years at 10.5% with no deposit.

Transfer Costs R40,269.00 **Bond Costs** R27,105.00

These calculations are only a guide. Please ask your conveyancer for exact calculations.

Monthly Rates R1,500

Family home in Grantham Park.

This beautiful, well-maintained home is perfect for a large family, offering ample space and comfort. Featuring four spacious bedrooms and two modern bathrooms, this property ensures privacy and convenience for every family member.

The open-plan living areas provide a warm, welcoming atmosphere, ideal for entertaining and everyday living. With a double garage, there's plenty of room for parking and storage.

The property is meticulously cared for, making it move-in ready, and offers a comfortable and stylish living experience for a growing family.

Features

Pets Allowed		Yes			
Interior		Exterior		Sizes	
Bedrooms	4	Garages	2	Land Size	1,054m²
Bathrooms	2	Security	No		
Kitchens	1	Pool	Yes		
Recep. Rooms	2	Views	False		
Furnished	No				
Extras					
Burglar Bars Stove					

<https://richardsbay.seeff.com>