

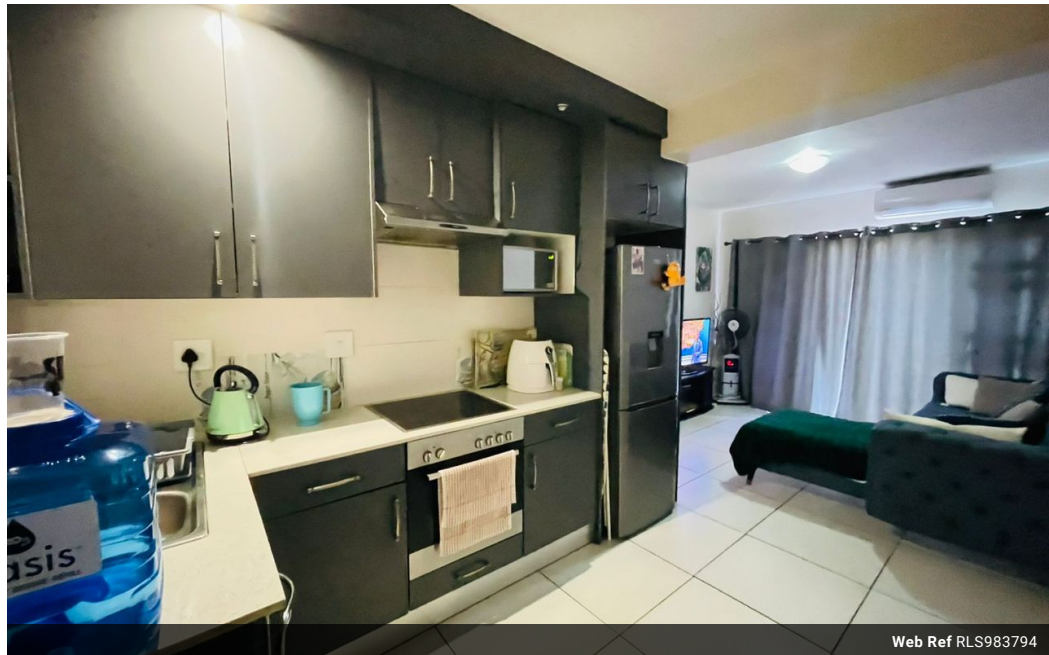


Gugulethu Motha
073 026 5665
gugulethu.motha@seeff.com

Contact Richards Bay

035 7890490

Lira Link Rd, Unit 2 Montego Park, Richards Bay Central, Richards Bay, 3900



Web Ref RLS983794



R830,000

🛏️ 2 🚿 1

Monthly Bond Repayment R8,426.40

Calculated over 20 years at 10.75% with no deposit.

Transfer Costs R28,244.00 **Bond Costs** R21,450.00

These calculations are only a guide. Please ask your conveyancer for exact calculations.

Monthly Levy R1,100 **Monthly Rates** R1,200

Modern Ground Floor Flat in Prime Location

Situated within walking distance to town and close to all essential amenities, this well-maintained ground-floor flat offers convenient and comfortable living. Located in a secure and neat complex, the unit features two spacious bedrooms, a full bathroom, and a stylishly renovated modern kitchen. The open-plan lounge flows effortlessly, creating a welcoming living space.

Enjoy access to a communal pool for those warm days, and benefit from an allocated carport for added convenience. Perfect for first-time buyers, investors, or those looking to downsize without compromising on location or lifestyle.

Features

Interior

Bedrooms	2
Bathrooms	1
Kitchens	1
Recep. Rooms	1
Furnished	No

Exterior

Carports / Parkings	1
Security	No
Pool	No
Views	False

Sizes

Floor Size	46m²
Land Size	5,428m²

Extras

Burglar Bars Granite Tops Stove