

**Seeff**

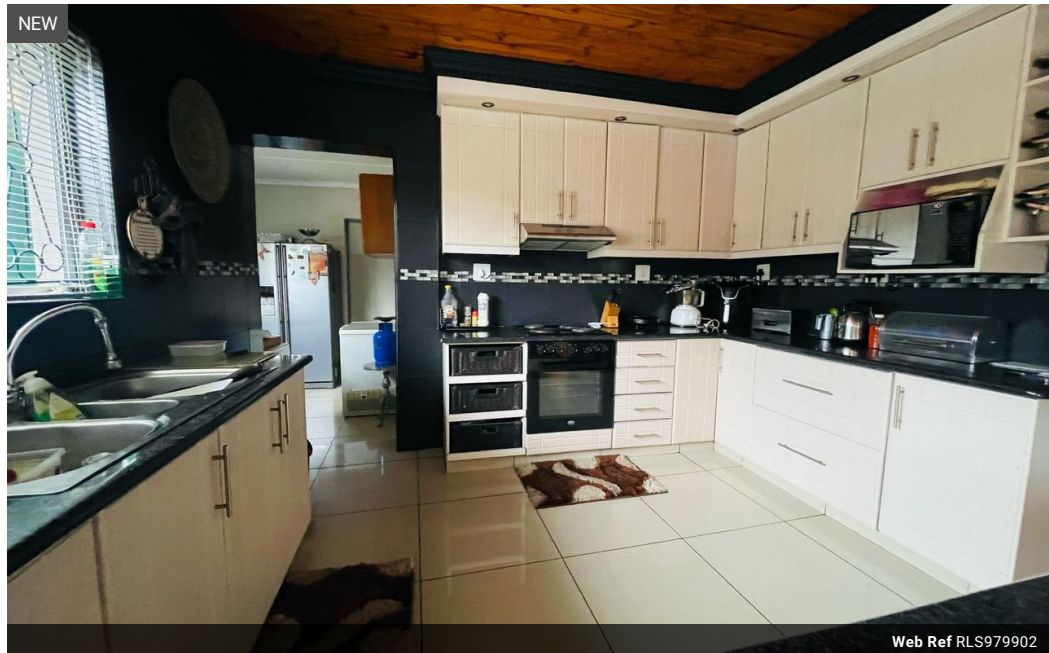


**Gugulethu Motha**  
073 026 5665  
gugulethu.motha@seeff.com

Contact Richards Bay

035 7890490

Lira Link Rd, Unit 2 Montego Park, Richards Bay Central, Richards Bay, 3900



Web Ref RLS979902



R3,300,000

🛏️ 3   🚿 2   🏠 1

**Monthly Bond Repayment** R34,062.22  
Calculated over 20 years at 11% with no deposit.

**Transfer Costs** R197,547.00   **Bond Costs** R45,955.00  
These calculations are only a guide. Please ask your conveyancer for exact calculations.

**Monthly Rates** R1,800

### A Jewel of an Investment Opportunity

With its unbeatable combination of business rights, spacious living areas, and excellent rental income opportunities, this property is the ultimate investment opportunity. Whether you're a seasoned investor or a savvy first-time buyer, this diamond in the bay is sure to shine brightly in your portfolio.

As you step inside, you'll be greeted by the warmth and elegance of this beautifully designed home. The expansive interior boasts 3 spacious bedrooms, each a serene retreat, 2 bathrooms with a separate guest toilet. A lounge and 2 TV room, A dining area open-plan kitchen, complete with a spacious scullery, perfect for culinary creativity

But that's not all - this incredible property also features two outbuildings.  
Flatlet 1: A self-contained flatlet with its own entrance. This Flatlet consists of three bedrooms, two...

### Features

**Pets Allowed** Yes

**Interior**

Bedrooms	3
Bathrooms	2
Kitchens	1
Recep. Rooms	2
Furnished	No

**Exterior**

Garages	1
Security	No
Pool	Yes
Views	False

**Extras**

Garden Totally Walled Guest Toilet Shower, Toilet and Basin Granite Tops Breakfast Nook