



Cameron Moodley
060 305 4162
cameron.moodley@seeff.com

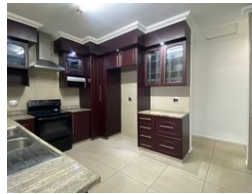
Contact Richards Bay

035 7890490

Lira Link Rd, Unit 2 Montego Park, Richards Bay Central, Richards Bay, 3900



Web Ref RLS976558



R15,800 pm

Lease Period 12 months
Annual Escalation -

Availability Immediately

Deposit -

3 2 2

Modern beauty if sought after Arboretum

Beautiful home with modern features in a child-friendly neighborhood with an immaculately tiled interior with built-in cupboards throughout.

The kitchen boasts granite tops, a stove with an oven, and an extractor fan. The beautiful garden also has a swimming pool with ample parking and space to entertain family and friends.

This house certainly has curb appeal and is ready for your family to make it a home.

Features

Pets Allowed Yes

Interior

Bedrooms	3
Bathrooms	2
Kitchens	1
Recep. Rooms	2
Furnished	No

Exterior

Garages	2
Security	No
Pool	Yes
Views	False

Extras

Electric Gate Electric Garage Air Conditioner Granite Tops Stove Eye Level Oven Dishwasher Connection Washing Machine Connection