



Sheryl Pillay
 063 567 1657
 sheryl.pillay@seeff.com

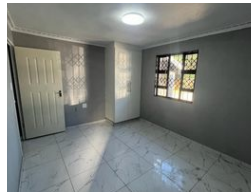
Contact Richards Bay

035 7890490

Lira Link Rd, Unit 2 Montego Park, Richards Bay Central, Richards Bay, 3900



Web Ref RLS956920



R15,000 pm

Lease Period 12 months **Availability** Immediately **Deposit** -
Annual Escalation -

3 3

Family home for rental in the heart of Birdswood

This exceptional 3-bedroom, 3-bathroom home offers not only the perfect abode for your family.

This charming home welcomes you with its inviting curb appeal and beautifully landscaped front yard. Step inside, and you'll be greeted by a light-filled living space that exudes warmth and comfort. The open floor plan seamlessly connects the living room, and kitchen, creating a perfect setting for family gatherings and entertaining guests. The spacious kitchen has ample counter space and plenty of storage for all your culinary needs.

Imagine preparing delicious meals while engaging with your loved ones in the adjacent dining area. The three well-appointed bedrooms provide tranquility and privacy for every member of the family. The master suite boasts its own en-suite bathroom, offering a serene retreat for relaxation after a long...

Features

Pets Allowed	Yes			
Interior		Exterior		Sizes
Bedrooms	3	Security	No	Floor Size
Bathrooms	3	Pool	No	150m ²
Kitchens	1	Views	False	
Recep. Rooms	1			
Furnished	No			