

# Seeff



**Sheryl Pillay**  
063 567 1657  
sheryl.pillay@seeff.com

Contact Richards Bay

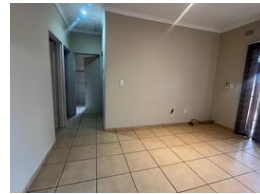
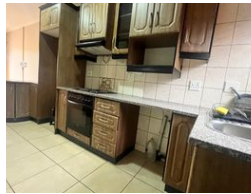
035 7890490

Lira Link Rd, Unit 2 Montego Park, Richards Bay Central, Richards Bay, 3900

## 3 Bedroom Simplex To Let in Brackenham



Web Ref RLS980193




R8,500 pm

**Lease Period** 12 months  
**Annual Escalation** -

**Availability** Immediately

**Deposit** -

 3  1

### Stunning 3 bedroom simplex in popular suburb

Ideally located in the well known area of Brackenham, lies this 3 bedroom spacious home, fitted bathroom, open plan living areas and fitted kitchen.

Further, there is a private garden and parking as well as automated gate access.

Call me today to view this stunner!

### Features

**Pets Allowed** Yes

#### Interior

Bedrooms	3
Bathrooms	1
Kitchens	1
Recep. Rooms	1
Furnished	No

#### Exterior

Carports / Parkings	1
Security	No
Pool	No
Views	False